



# FIRE GUARD



ARM  
YOURSELF

- ✓ F.R. FABRICS
- ✓ NFPA 2112
- ✓ NFPA 70E



## SPECIFICATIONS

The Fire Guard by Flame, is a cleverly designed pants and shirt suit, that comes in an assortment of FR Fabrics, suitable for various work applications. All garments have been constructed to provide extra comfort and added Protection to the End User, through the use of Fabrics that are NFPA 70E and NFPA 2112 Compliant, which protect against Arc Flash and Flash Fire Hazards.

The Standard Safety features include Double Stitching FR Thread on pants and shirt and 1" wide FR reflective strips on the sleeves, legs and back of the garment for durability and added visibility. With comfort of the end user always in mind, The Fire Guard suit comes outfitted with double snaps on cuffs for adjustable fit, as well as two double stitched side pockets for added storage and convenience. The Fire Guard suits feature additional ergonomic considerations such as elastic waist bands for maneuverability and a smartly placed pen pocket on the left sleeve of shirt.

Quality and value guaranteed. Experience the Flame Advantage today..... with The Fire Guard by Flame.

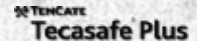
Available, but not limited to, the following F.R. Fabrics

DuPont™  
**NOMEX® IIIA**

DuPont™  
**NOMEX® Comfort**

DuPont™  
**NOMEX® MHP**

DuPont™  
**Protera**



### Front Features

- Double Stitching FR thread for added strength.
- Five Rust free Front Snaps placed on front of shirt for ease of access and durability..
- One Main Double Stitched Front Chest Pocket C/W Flap and Snap.
- One Double Stitched Front Chest Pocket for durability and storage..
- 1" wide reflective strips on sleeves, legs and backs for added visibility and safety
- Double snaps on cuffs for adjustable fit.
- Double stitched front patch pockets on pants for added storage and convenience.
- Pen Pocket on Left Sleeve

### Back Features

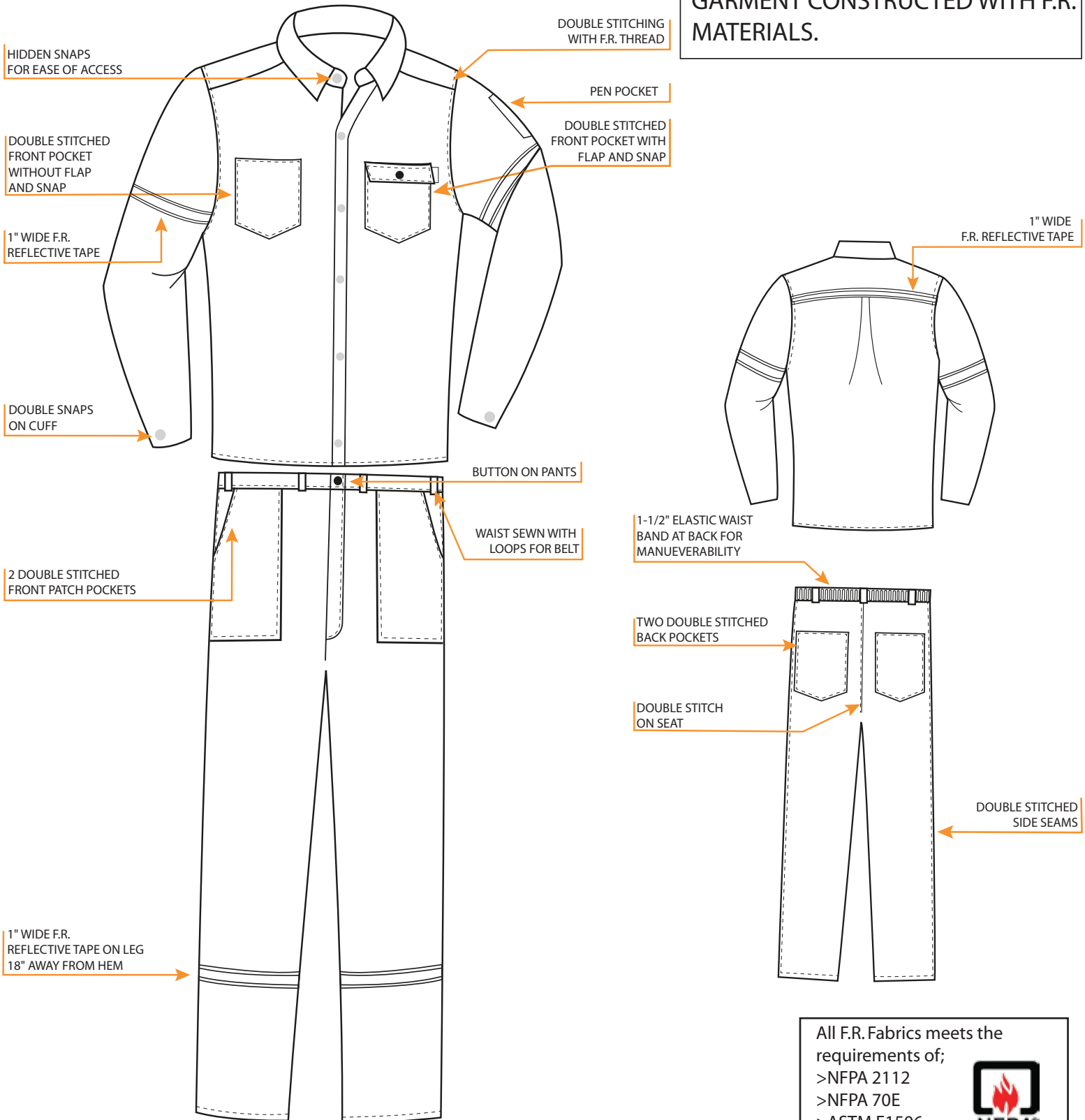
- Two double stitched back pockets for durability
- Double stitch on seat for added strength.
- Double stitched waist band for durability.
- 1-1/4" elastic waist band at back for comfort and maneuverability
- Side seams double stitched for added strength

### Standard Coverall Options

- Long sleeve Only
- Available in a Variety of Colors.

*Additional customization available based on customer request and requested volume.*

GARMENT CONSTRUCTED WITH F.R. MATERIALS.



All F.R. Fabrics meets the requirements of;

- >NFPA 2112
- >NFPA 70E
- >ASTM F1506

